



MAS
- WMT OK
@ 200

03.23.2015

- RESPONSIBILITIES OF MICHAEL DAVIS AT MOLE RICHARDSON COMPANY.
- This summary of my work for Mole-Richardson Company reveals multiple projects while I worked at Mole-Richardson from the end of 2012 to the end of 2015. My title at the company was Senior Research and Development Engineer and I had project responsibility for these products which included mechanical engineering, industrial design (limited), enclosure prototypes management and release of engineering fully detailed documentation packages to drafting, all under the direction of the VP Engineering.
- PROJECTS: 894 200W JUNIOR LED FRESNEL, 896 400W STUDIO JUNIOR LED FRESNEL, 934 900W SENIOR LED FRESNEL, 958 200W AND 959 400W LED SOFT LIGHT PLATFORM (1K, 2K SOFT LIGHT LED, 1K, 2K VARI-SOFT LED.) 929 900W SPACE LIGHT PLATFORM, (900W SPACE LIGHT LED, 900W VARI-SPACE LED), PANEL LIGHT CONCEPTS.
- The company had a basic policy of maintaining corporate brand image to reflect the strong traditional image established by the founder in the 1930's therefore much of the industrial design influence was restricted by adherence to brand style which includes 88 years of Hollywood movie industry lighting equipment legacy.
- I was also responsible to assist the vice president of engineering (where possible) for new invention and innovation within the product line making recommendations on those topics.
- My responsibilities also included all patent disclosure development and working with patent attorneys developing five or six patents pending.
- In addition to patent development I managed all product safety and inspections by certification organizations such as Underwriters Laboratories, TÜV and Intertek Corporation. These organizations certify the safety of all products manufactured by Mole Richardson Company and that those products comply with international standards of CE (European Union) CSA (Canada) and UL (United States) product safety standards. I also acquired new inspection tools for Ground Bond and Hi Pot testing.
- Related to those activities I was the Mole Richardson corporate representative for PLASA (Professional Lighting and Sound Association) Electrical Power Working Group. This organization which controls and writes standards for ANSI, ISO and UL meets four times a year at various locations around the country.

MOLE RICHARDSON COMPANY



900W Space and VariSpace LED

SolidWorks Concept

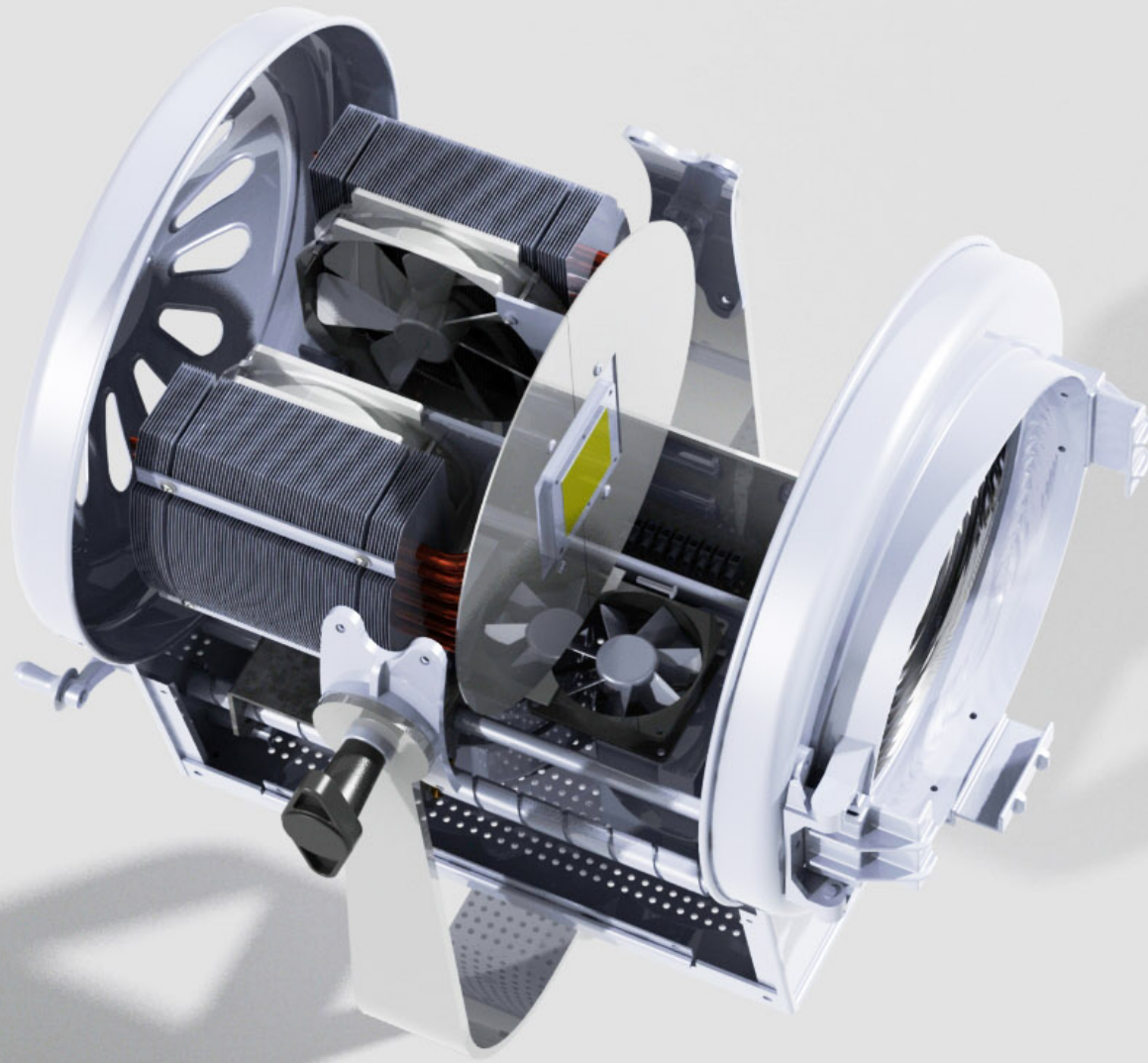


900W SPACE and VariSPACE LED



896 900W SeniorLED FRESNEL

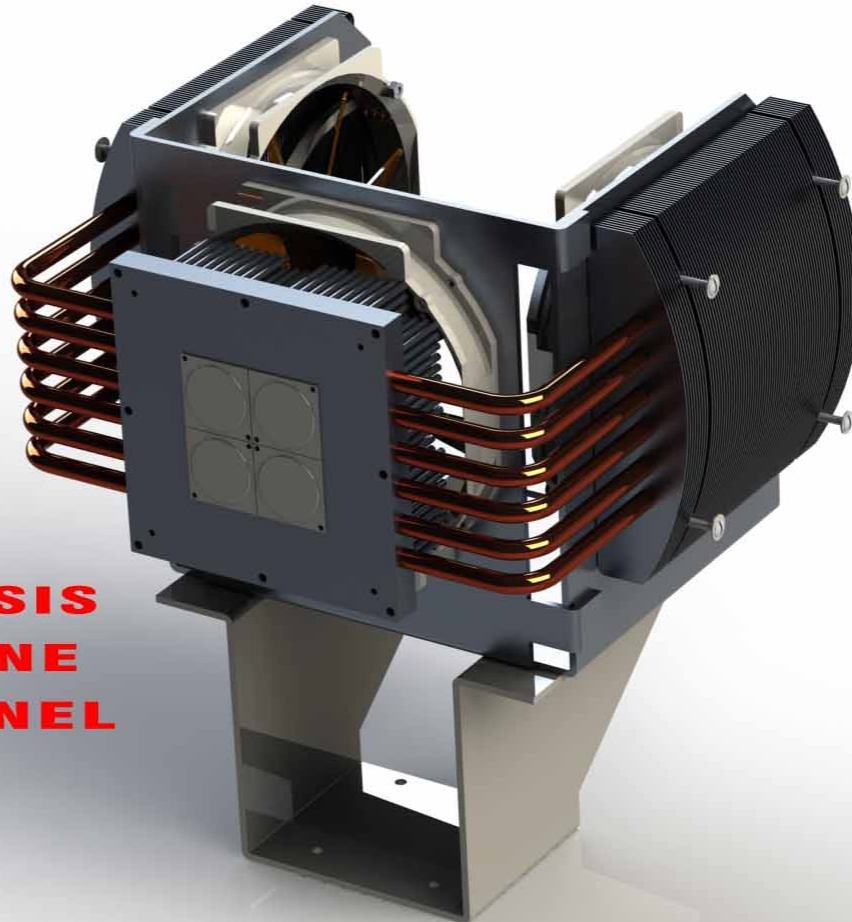
SolidWorks Render



896 900W SeniorLED FRESNEL

LIGHT ENGINE AND FOCUS MECHANISM

SOLIDWORKS RENDER

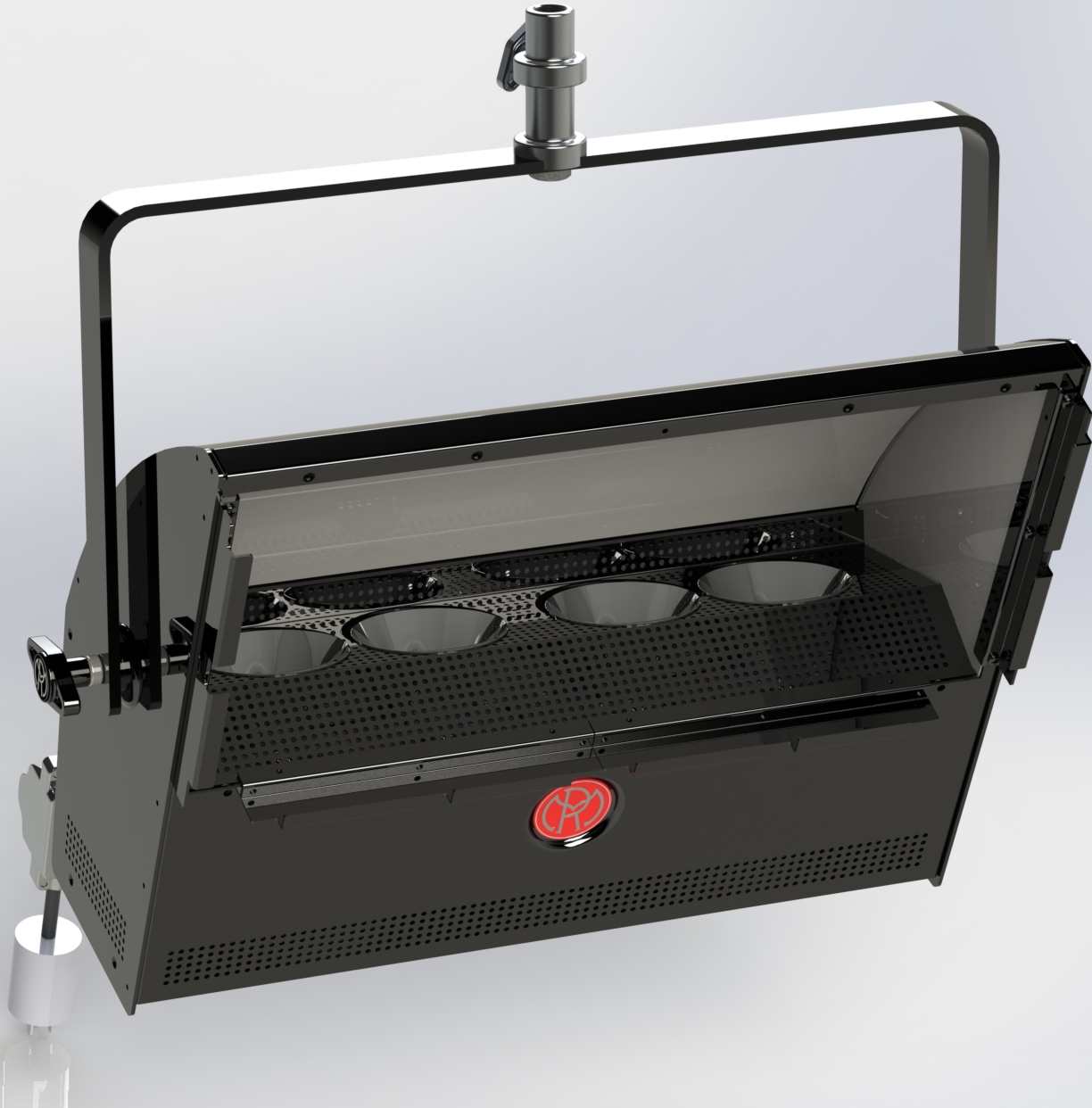


**6431 CHASSIS
LIGHT ENGINE
10 IN FRESNEL
1/13/15**



896 900W SeniorLED FRESNEL

lab photos



400W Soft and VariSOFT LED

SolidWorks Render



200W and 400W Soft and VariSOFT LED

